

TO LET

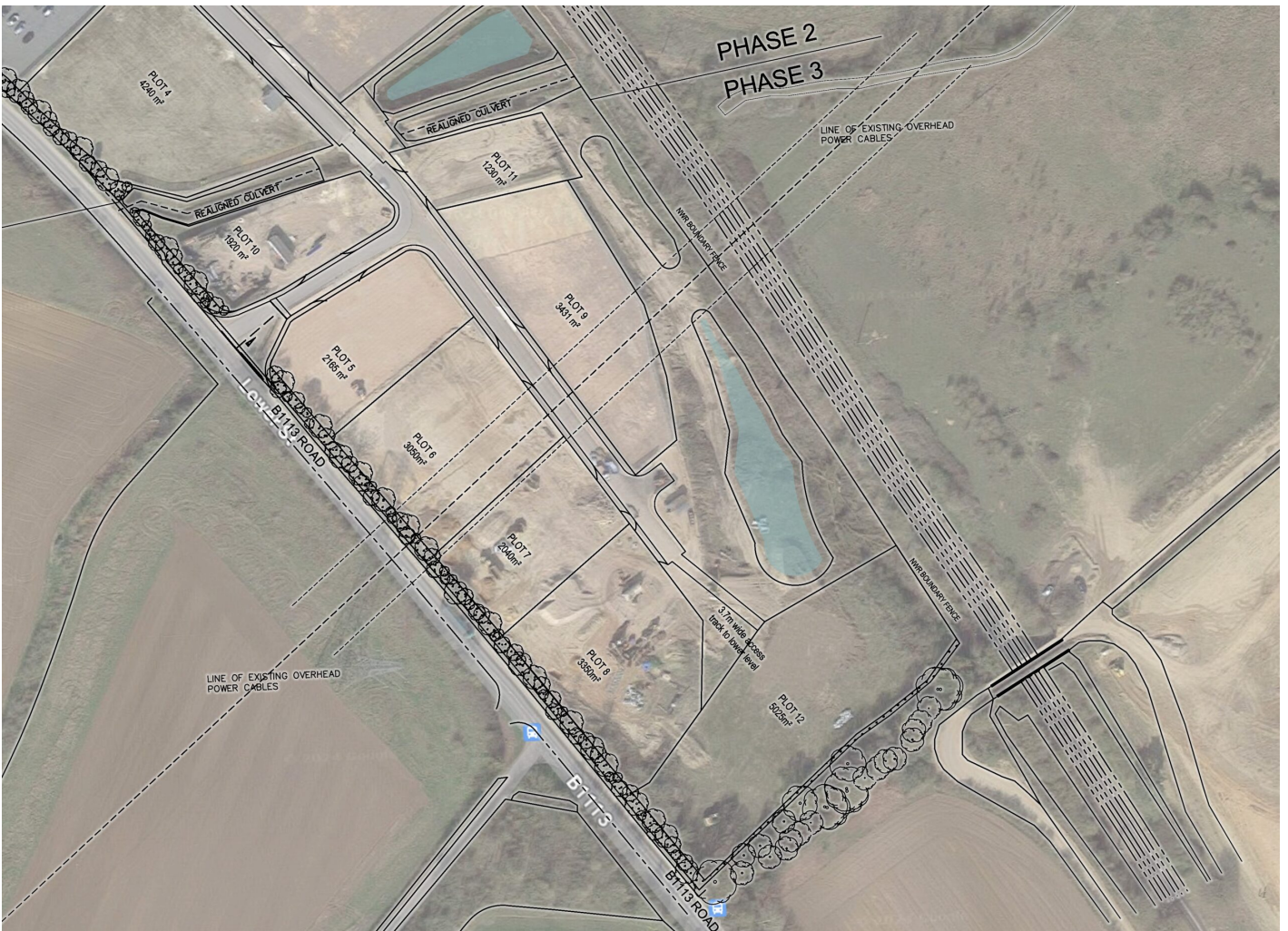
Phase III, Lion Barn Industrial Estate, Needham Market

£60,000 Per Acre

📍 0.3 - 1.24 Acres

Reference: 50

Industrial



PROPERTY DESCRIPTION

Lion Barn Phase III is currently under construction with a number of plots available for rent or sale, varied in size from 0.3 of an acre to 1.24 acres. Each plot has its own entrance with secure fencing surrounding it, perfect for whatever your business entails. Being part of the Lion Barn Industrial Estate also means that the plots are within minutes of the A14 but set back enough to also be on the outskirts of Needham Market. The price listed is £60,000 per acre per annum.

Available plots are as below:

Plot 5 - 0.53 acre - Solicitor's Instruction

Plot 7 - 0.50 acre - Under Offer

Plot 8 - 0.83 acre - Under Offer

Plot 9 - 0.84 acre - Under Offer

Plot 11 - 0.30 acre

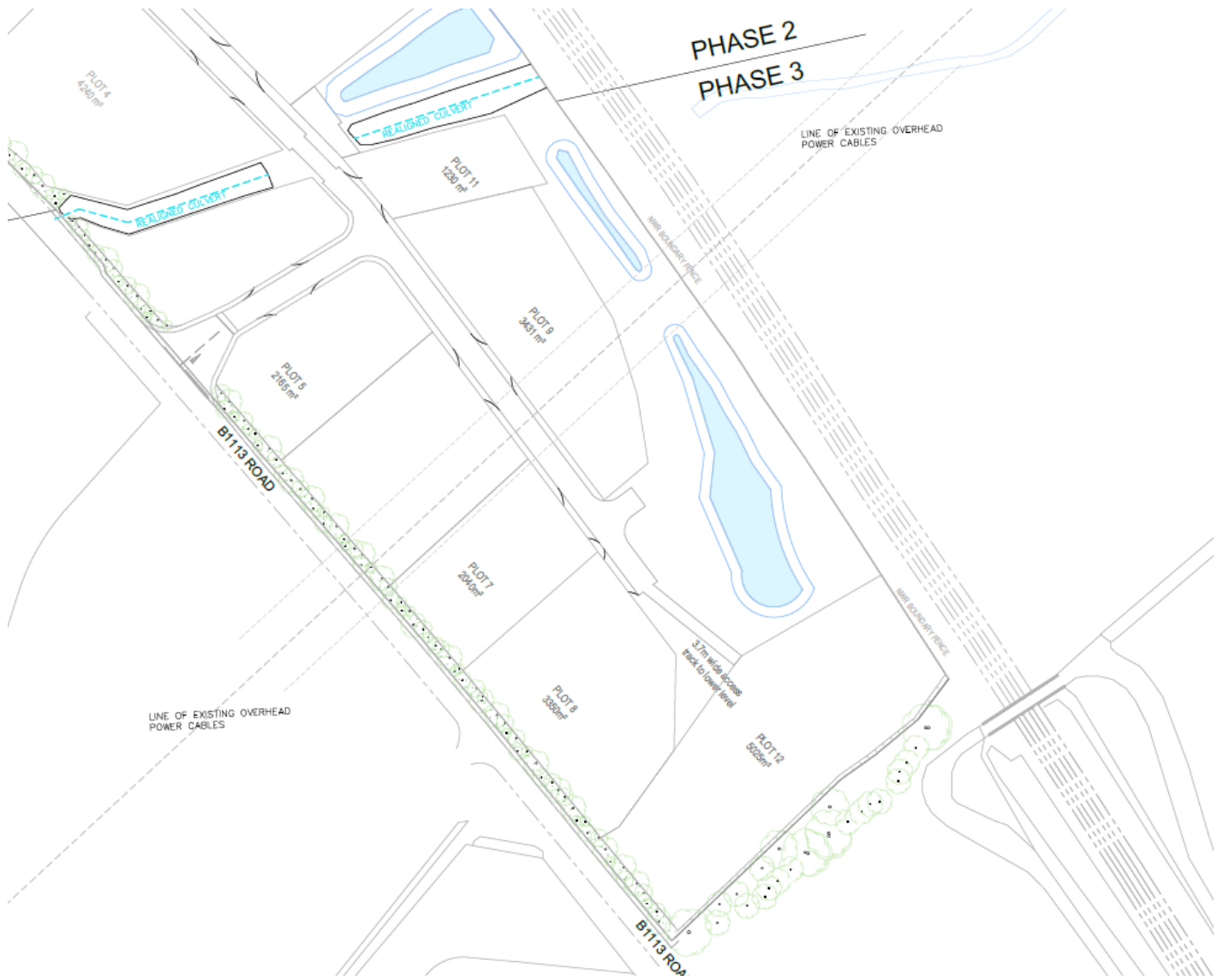
Plot 12 - 1.24 acre

The plots are currently having power, water and drainage installed and all have type 1 MOT shingle surface on them. Further discussions could be had to put structures on the plots if desired. Rates are not included within the rental fee and the plots are pending assessment to confirm their ratable value.

KEY FEATURES

- Call to discuss options!
- Flexibility with ability to tailor to suit requirements
- Flexible terms
- Parking
- Popular business park location
- Prominent location
- Yard area available

GALLERY



Peter Colby Commercials

School Lane, Sprowston

NR7 8TL

T: 01603253855

E: info@pccproperty.co.uk