

TO LET

## Office 10GF Diamond House, Vulcan Road North, Norwich

**£544 pcm**

📏 272 Sq Ft

Reference: NORDHG10

Office



## PROPERTY DESCRIPTION

Diamond House forms part of the Diamond Road Complex, and has been recently refurbished to an exceptionally high standard, with warm and cool air-conditioning and new windows as a key features of the office. Diamond House offers car parking facilities, disabled facilities and is located within easy reach of main roads and Norwich Airport. Our competitive monthly rent includes utilities, rates and ample on-site car parking, and there is 24/7 access via a secure entry system. These offices are the perfect space for both small businesses just starting out or established companies looking for a base in the Norwich area. Communal areas are cleaned on a regular basis as part of the serviced office cost.

## KEY FEATURES

- 24/7 Access via entry system
- Ample car parking facilities
- Disabled facilities
- Lift to first floor
- Recently refurbished
- Serviced offices
- Warm / Cool air system

## GALLERY







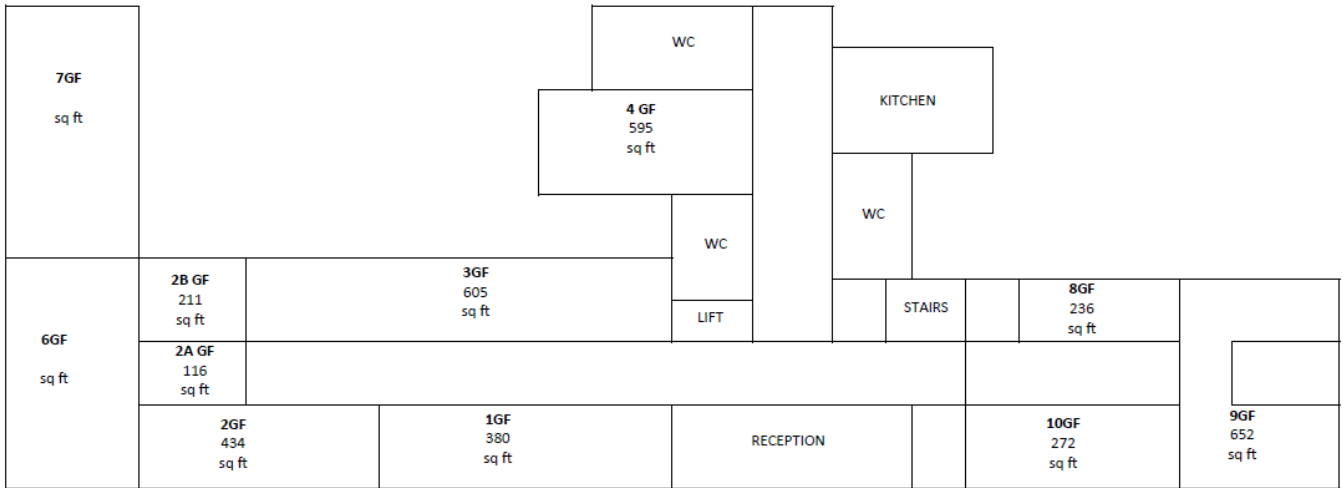
## LOCATION

Office 10GF Diamond House, Vulcan Road North, Norwich, NR6 6AQ



## FLOORPLAN

17 2,575 sq ft											
WC	7 485 sq ft	6b 337 sq ft	6a	5 117 sq ft	4 156 sq ft	LIFT	STAIRS	WC	KITCHEN	2 142 sq ft	1 213 sq ft
											WC
WC	KITCHEN	8 262 sq ft	9 492 sq ft	10 213 sq ft	11 327 sq ft	12 149 sq ft	13 127 sq ft	14 226 sq ft	15 134 sq ft	16 236 sq ft	



## Peter Colby Commercials

School Lane, Sprowston

NR7 8TL

T: 01603253855

E: [info@pccproperty.co.uk](mailto:info@pccproperty.co.uk)